

Atlantic Pottery
RUSTICS

ATLANTIS COLLECTION

LIKE GREAT ANCIENT ARTIFACTSEXCAVATED FROM THE SEA....

THE UNIQUE, ONE-OF-A-KIND FINISH OF THE ATLANTIS COLLECTION MAKES A STATEMENT!

THEY MAKE WONDERFUL WATER FEATURES, EXCEPTIONAL PLANTERS AND FABULOUS ARCHITECTURAL ACCENTS.



AP-46044-AD		Cylinder - Atlantis		
Size	OD	ID	H	
A	22½	19	27½	



AP-46111-AD (Set of 3)		Milan - Atlantis		
Size	OD	ID	H	
A	18	14½	24	
B	13½	10½	19	
C	9½	7½	14½	



AP-46401-AD		Lotus Pond - Atlantis			
Options	Size	OD	ID	H	
Set of 2	Single	Lg	32	29	23
	Single	Sm	24	20½	17



AP-46400-AD Sana - Atlantis

Size	OD	ID	H
A	23½	20½	46



AP-46076-AD (Set of 2) Egg Planter - Atlantis

Size	OD	ID	H
A	23	19½	18
B	19	16	15



AP-46023-AD French Urn - Atlantis

Options	Size	OD	ID	H	
Set of 2	Single	Lg	27½	22½	30½
	Single	Sm	20½	16	23½



AP-46094-AD Alibaba Jar - Atlantis

Size	OD	ID	H
A	25	11	36½



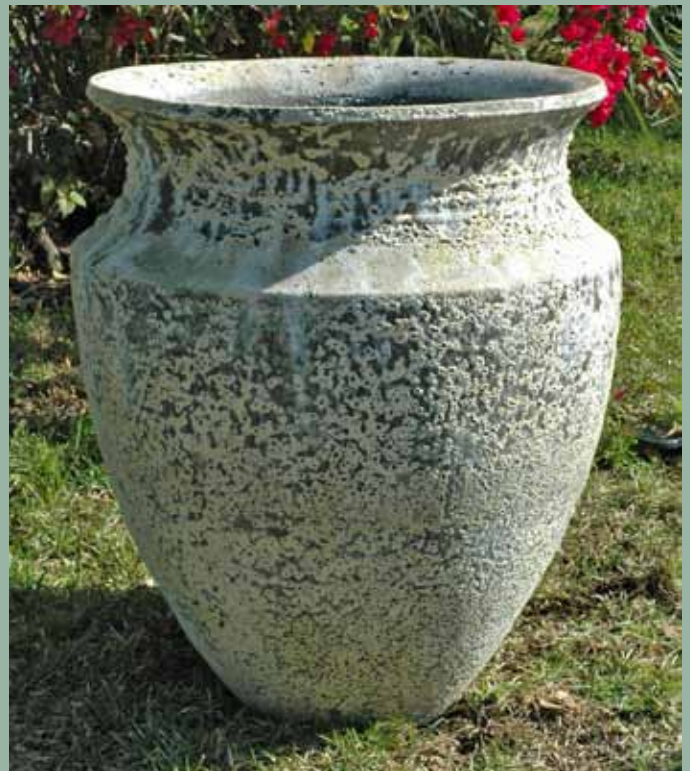
AP-46018-AD Pharaoh - Atlantis

Size	OD	ID	H
A	29	18½	42½



Fountain Fixture

Options	OD
AP-46018-FF	15
AP-46325-FF	21



AP-46322-AD Skorpio - Atlantis

Size	OD	ID	H
A	32	23	38½



AP-46214-AD **Kos Jar - Atlantis**

Size	OD	ID	H
A	27	10	49



AP-46402-AD **Spartan - Atlantis**

Size	OD	ID	H
A	28	12	69½



OLD STONE

OUR OLD STONE COLLECTION PROVIDES A RUSTIC AGED STONE LOOK THAT WILL HIGHLIGHT ANY HOME OR GARDEN.

THE POTS ARE HIGH FIRED, THEN SANDBLASTED TO ACHIEVE AN UNIQUELY BEAUTIFUL, VERY DURABLE SURFACE.



**AP-45014-OS
(Set of 3)**

**Button Pot
- Old Stone**

Size	OD	ID	H
A	29½	24½	20½
B	24½	20	17½
C	18	14½	13½



**AP-45172-OS
(Set of 3)**

**Square Rim Pot
- Old Stone**

Size	OD	ID	H
A	20½	17½	22½
B	14	11½	19½
C	9½	7½	12



**AP-45366-OS
(Set of 4)**

**Egg Planter
- Old Stone**

Size	OD	ID	H
A	27	24	24
B	21½	19	19
C	18½	16	17
D	15¼	13	13½



AP-45016-OS **Lion Head Pot**
- Old Stone

Size	OD	ID	H
A	35	25½	27½



AP-45019-OS **Giant Crucible Pot**
(Set of 3) **- Old Stone**

Size	OD	ID	H
A	27½	24	35
B	22	19	29
C	19	16	23



AP-45180-OS **Indian Pot**
- Old Stone

Size	OD	ID	H
A	31½	26	34½



AP-45020-OS **Salty Egg - Old Stone**

Size	OD	ID	H
A	30	24	27½



AP-45184XL-OS Sala Pond - Old Stone

Size	OD	ID	H
A	45½	39	20

AP-45004-OS Heavy Rim Planter - Old Stone (Set of 3)

Size	OD	ID	H
A	32	26½	26½
B	25	21	20
C	17½	14	14



AP-45150-OS Honey Spoon Jar - Old Stone

Size	OD	ID	H
A	30	18	28

AP-45022-OS 4 Handle Jar - Old Stone

Size	OD	ID	H
A	27	17½	32

Terms and Conditions

Pricing: All prices are FOB our warehouse in Fort Lauderdale, Florida. Prices are subject to change without notice.

Payment Terms: Payment may be made by cash, check or credit card (Visa, Mastercard or American Express). First orders require prepayment or COD. Credit terms may be available on approved credit applications.

Order Size: Minimum order for all orders shipped by common carrier is \$500. No minimums apply to wholesale orders picked up at our warehouse. Minimum order sizes vary on local deliveries, please inquire.

Delivery:

Local Delivery: We generally deliver on our own trucks within South Florida. Every effort is made to accommodate our customer's delivery request however our delivery schedules are adjusted to accommodate efficient delivery of multiple orders for the same area. Local delivery charges vary based upon distance and order size. Please inquire for current delivery area and rates at time of order. We do not provide placement or installation services.

Non-Local Delivery: Orders for locations beyond South Florida are shipped via common carrier. Shipping charges for non-local deliveries is freight collect unless otherwise agree upon. We will ship using the trucking company of your choice or choose the best and most economical carrier for your location based upon our discretion. Common carriers will generally move the freight to the rear of the truck but it is the customer's responsibility to make arrangements for unloading. Additional charges apply if you require the freight company to unload or move the goods into your business. Residential (home business) deliveries will incur additional charges. Charges for special services such as lift gate, inside delivery, storage, redelivery, etc. are the responsibility of the customer.

Packaging: Our pottery is palletized and packed by experienced packers. We use cardboard, foam, shrink wrap and strapping to protect your order before it leaves our warehouse to ensure that your order reaches you in the best possible condition.

Claims: Claims for damages must be made immediately after receipt of the merchandise. Do not sign the delivery receipt until you have completed a visual inspection of the palletized merchandise. Please remove the outer packing and visually inspect the merchandise in the presence of the delivery driver. Record any signs of damage on the delivery receipt at this time. Failure to note the damages at time of receipt will result in a denial of your claim.

Products: Our planters come from all over the world. We work with several of the best producers to bring you our comprehensive collection of planters. Our pottery is handcrafted which makes each piece unique. Variations in color and small imperfections are a natural result of the production of these handmade pots. These variations give each pot its character and beauty. We cannot guarantee that each pot will be exactly the same shape and color. Many of our planters are priced and sold as sets. We cannot separate individual pieces within these sets.

Returns or Cancellation of Order: Merchandise may not be returned or refused without prior authorization. Orders may not be cancelled after they have been shipped. Customers returning, refusing or cancelling orders will incur a 20% restocking fee and related freight charges.

Atlantic Pottery distributes several different lines of pottery. Each unique product line is represented by a separate catalog. If you do not see the item you are looking for here, it may be part of another collection. Do not hesitate to contact us with any of your pottery questions.

**Thank you for your consideration,
Atlantic Pottery**



**ATLANTIC
POTTERY**

Atlantic Pottery

**5801 NE 14th Avenue
Fort Lauderdale, FL 33334
USA**

Tel. (954) 727-0005 Fax (954) 727-0009

e-mail: info@atlantic-pottery.com

www.atlantic-pottery.com